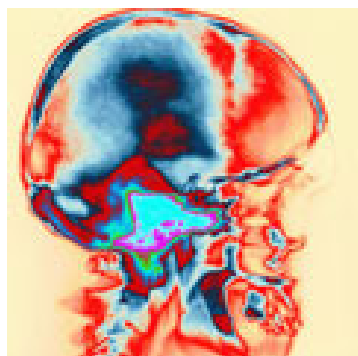


Case 1: The strategy for this global trial was designed to gain from India's strengths



Head & Neck cancer

Study Background:

- EMEA Submission
- To be marketed in EU

European sponsor

Sponsor Requirement

750 Patients in a Phase III Trial

Indication

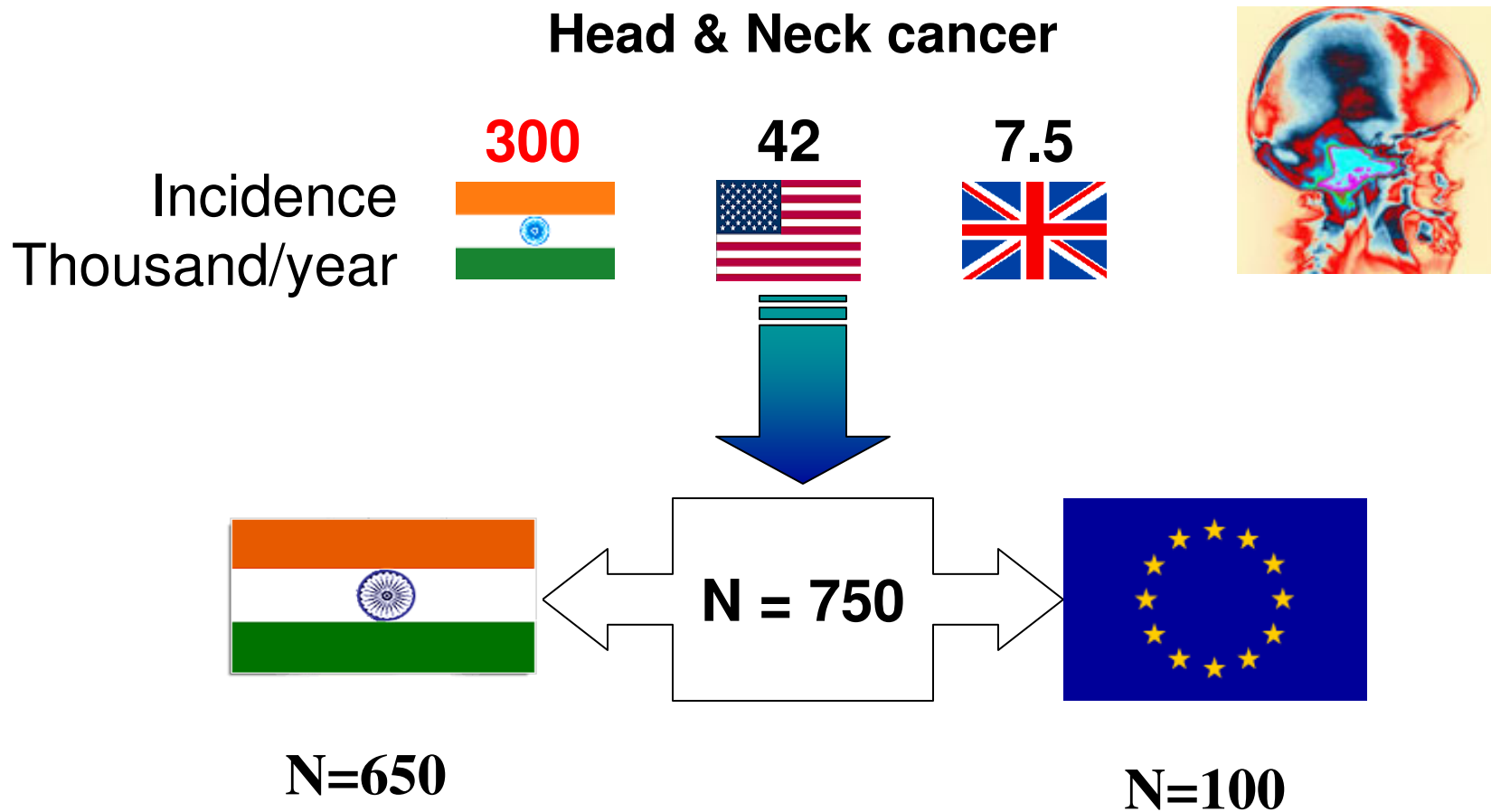
Patients with Head & Neck Cancer

Strategy

Recruitment in Europe and in India

Aim: Complete the study in fastest possible time and rationalize the costs to the best possible extent

Case 1: India can assume the major load of patients in several disease categories



Case 1: Faster patient enrollment, lesser sites translate in to significant time benefits

Performance of the European Arm Vs. Indian Arm

	European Arm	Indian Arm
Number of subject	85	650
Number of sites	22	5
Accrual period (months)	36	18
GCP compliance	√	√

Not to mention the fact that GCP Compliance, Quality, were delivered at much lower costs.